

A. Upgrading SKX Firmware (Android)

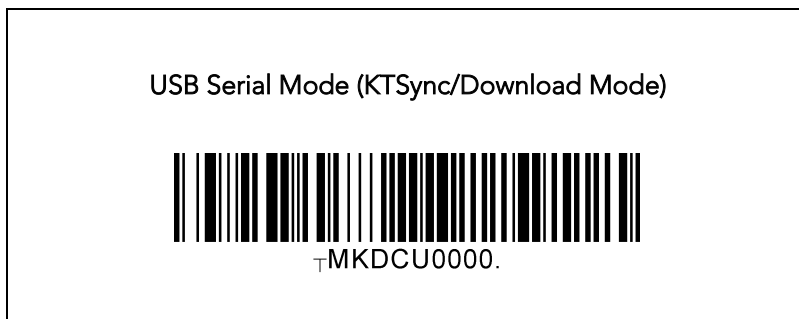
Either configuration below would be fine:



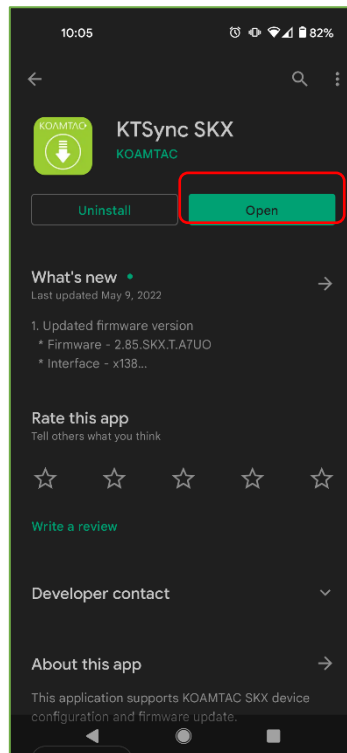
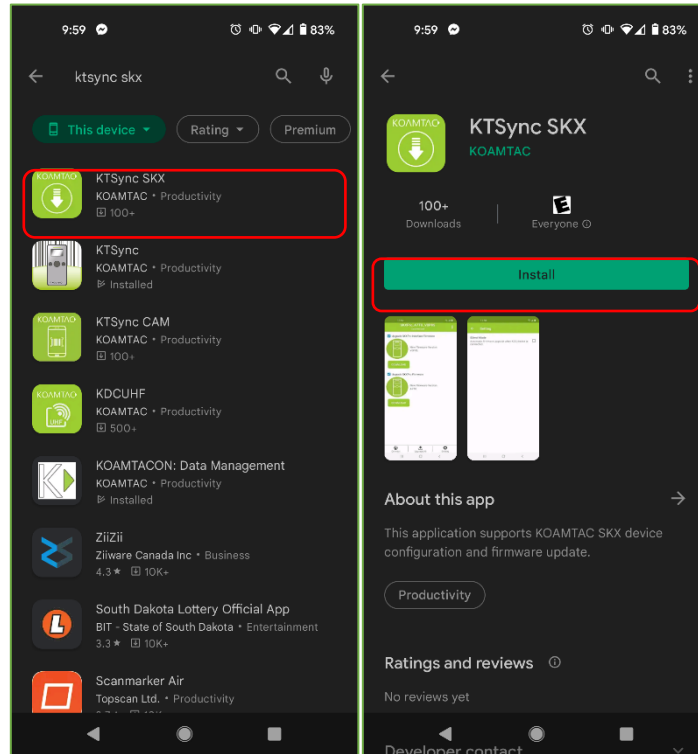
or



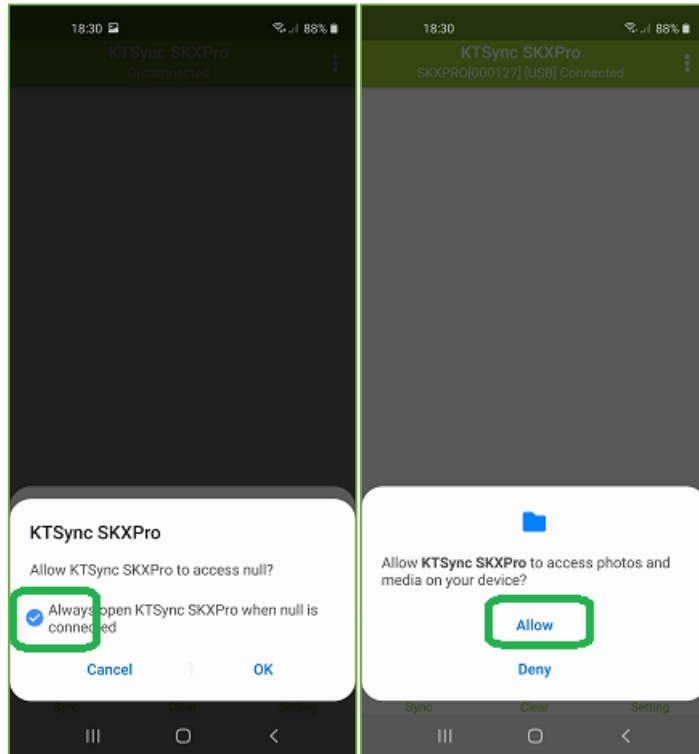
1. Mount the Android host device into SKX SmartSled® and power on the host device. (If there are any applications using SKX in the background, please close the apps.)
2. By default, SKXPro is in the HID keyboard mode.
3. In this mode, you can scan a barcode into any text field of any application.
4. To upgrade the firmware of the SKX SmartSled®, change the mode to Serial Mode (a.k.a. KTSync/Download Mode) by scanning this special barcode below first and wait for 3 seconds.



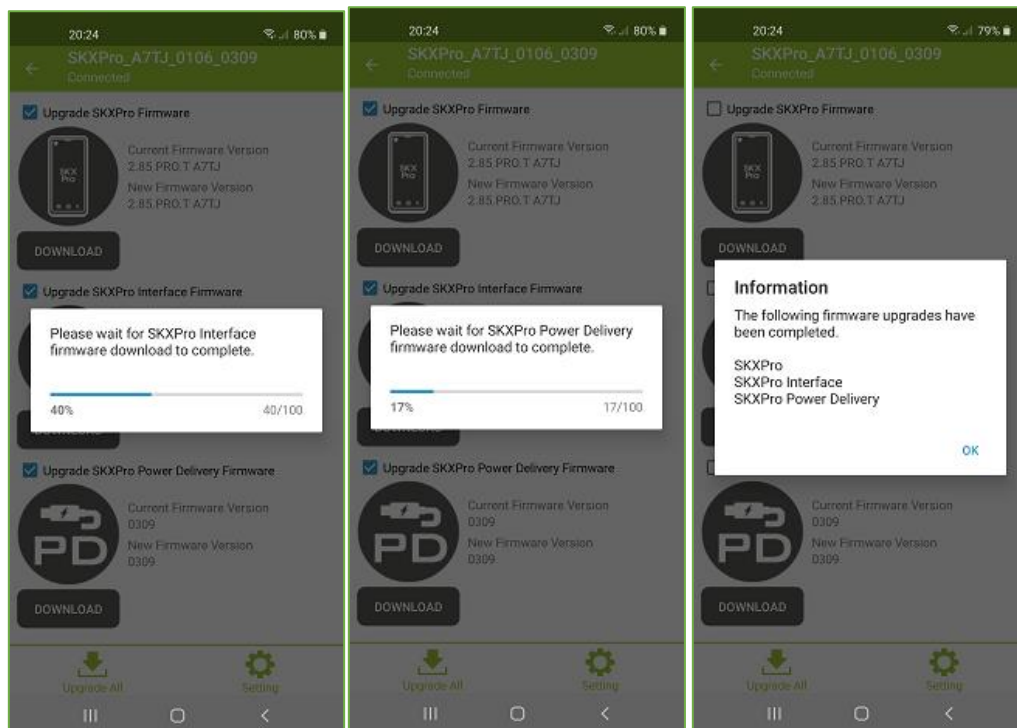
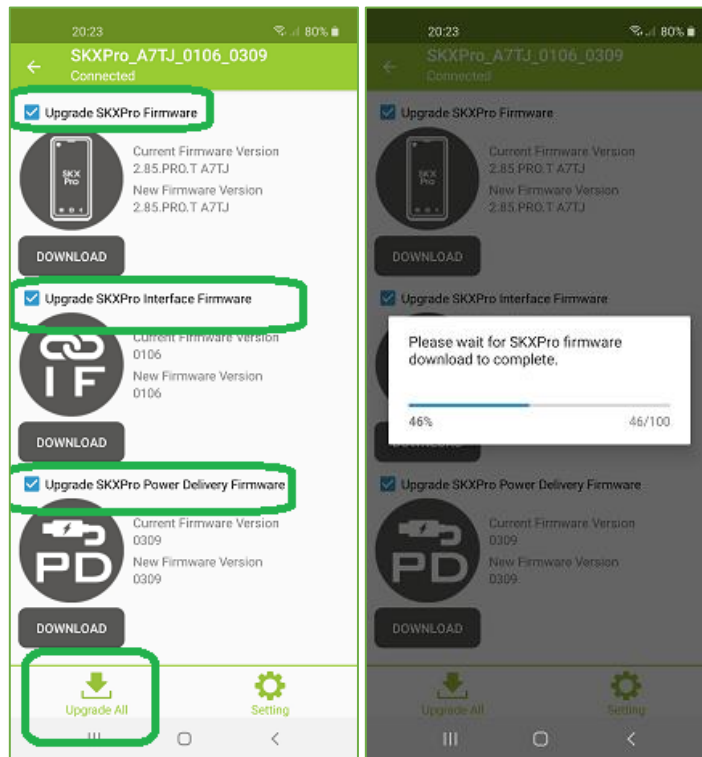
5. Now, go to Google Play Store and search for "KTSync SKX".
6. Download and install the "KTSync SKX" from the Play Store.



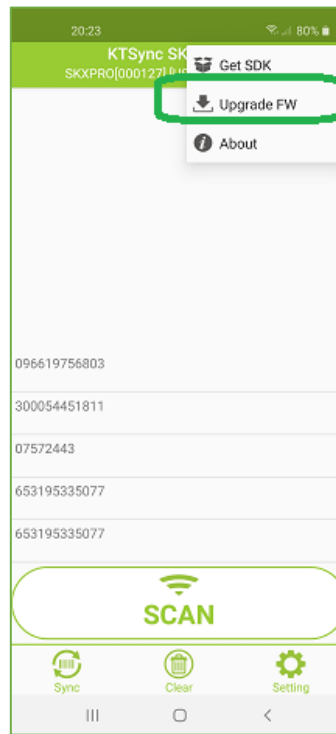
- When you open or run KTSync SKX for the first time on your phone, there are several permission popups, which require you to allow them all. This is a one-time setting from the first launch.



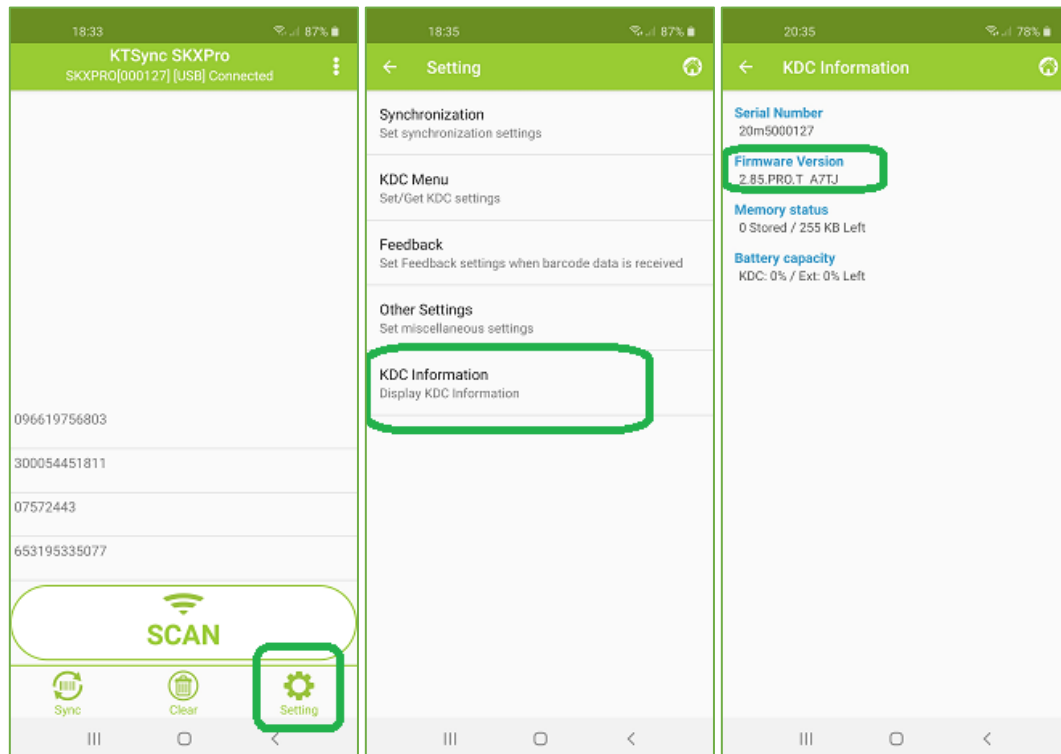
8. New firmware, if available, will be automatically detected and will prompt to upgrade.
9. The items highlighted in green are new firmware available to download. They can be downloaded individually or all at once by tapping "Upgrade All" at the bottom.



10. Alternatively, you can select "Upgrade FW" from the menu in the upper right corner and follow the step 9 to download the firmware.



11. Once firmware has been downloaded and installed, make sure the version number has updated.

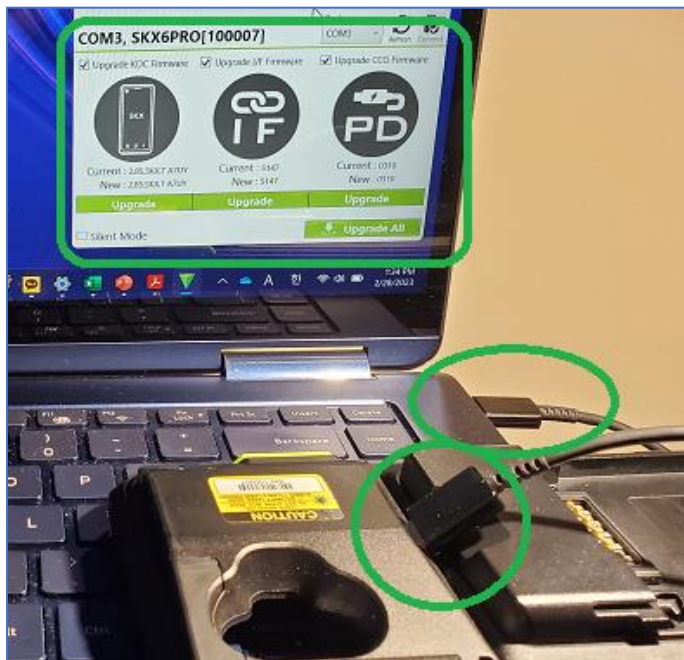


12. When the upgrade is complete, scan the HID barcode to go back to the default:



B. Upgrading SKX Firmware (Windows)

Here is the configuration:

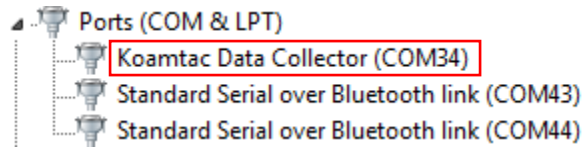


1. Download KDC driver at: <https://koamtac.com/support/downloads/drivers/>
 - Extract the .zip file (Device.Driver.zip), run Setup.exe only.
 - Follow the instructions on the installation wizard.
2. Download the SKX Firmware at: <https://koamtac.com/support/downloads/firmware/>
3. Extract the .zip file (SKXPRO_285_xxxx.zip) to a common location, open the application from the extracted folder.
4. Confirm the KDC Driver installed properly.
5. Make sure to remove XCover Pro phone from the SKXPro sled.
6. Plug in SKXPro to PC via USB port in the back of the SKXPro.
7. To upgrade the firmware of SKX SmartSled®, change the mode to Serial Mode (a.k.a. KTSync/Download Mode) by scanning this special barcode below first and wait for 3 seconds.



8. Navigate to Device Manager.
 - **Windows 7:** [Start > Control Panel > System and Security > System > Device Manager]
 - **Windows 10:** [Win+X Keys > M Key]

- In Device Manager, click on Ports (COM & LPT). The SKXPro should be listed as "Koamtac Data Collector (COM##)."



- Open the Upgrade application.
 - If the application did not automatically connect to your SKX SmartSled, find your SKX SmartSled's COM port by clicking on the drop-down menu under "Port," selecting it, and then clicking "Connect."
- Upgrade your firmware by Clicking "Upgrade" underneath your SKX SmartSled's Current and New Firmware.
 - You may also upgrade by selecting the "Upgrade All" button in the bottom right. This will attempt to also upgrade the other modules, if shown in green.
 - A warning pop-up will appear, click "Yes" to continue.
- When the upgrade is complete, scan the HID barcode to go back to the default:

