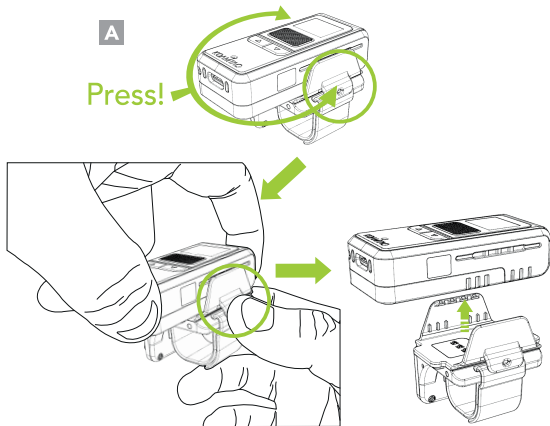


## Change Trigger Module Direction

1. To remove the KDC185 from the trigger module, press and hold the tabs on both sides of the trigger module cap while pulling the KDC185 upward. (A)



## Additional Accessories

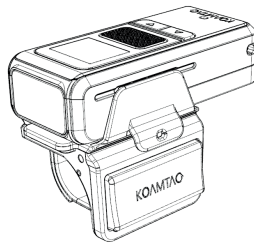
- ▶ KDC185 Safety Glove
- ▶ KDC185 2-Slot and 10-Slot Charging Cradles
- ▶ Protective Rubber Boot
- ▶ USB Type-C cable



116 Village Blvd, Ste 305, Princeton, NJ 08540  
+1 609-256-4700 [p](#) | +1 609-228-4373 [f](#)  
[info@koamtac.com](mailto:info@koamtac.com) | [www.koamtac.com](http://www.koamtac.com)

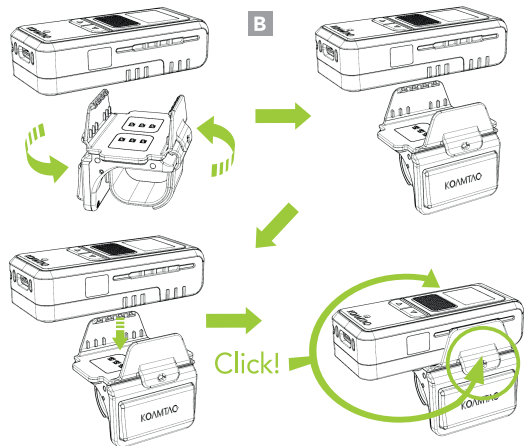


KDC185 Ring Scanner Manual



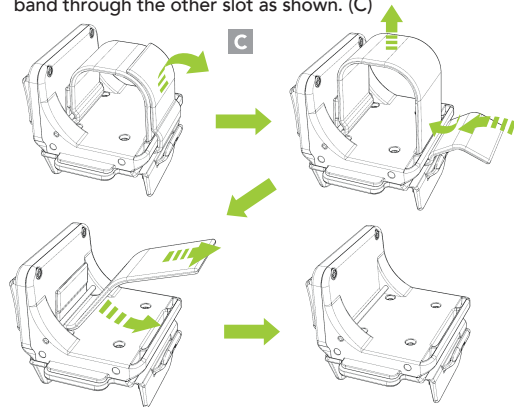
\* All pictures shown are for illustration purposes only.  
Actual product may vary.

2. Rotate trigger module 180 degrees and insert the KDC185 in to the trigger module cap until both sides click. (B)



## Replacing the Ring Band

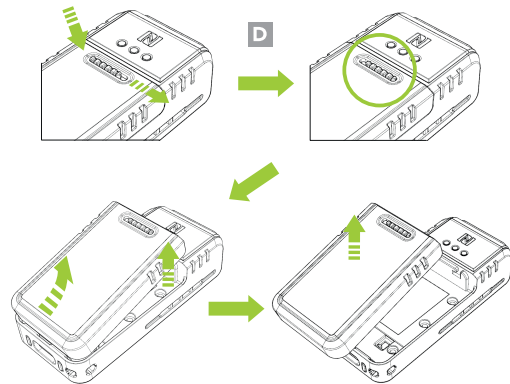
3. Detach one side of the band and pull the band up through the slot on the trigger module. Then, pull the rest of the band through the other slot as shown. (C)



\*To reattach the ring band, perform the previous steps in reverse.

## Replacing the Battery

4. Remove the battery by moving the battery door lock to the right and lift the battery from the top. (D)



\*To reinstall the battery, perform the previous steps in reverse.