



# KOAMTAC Fundamentals

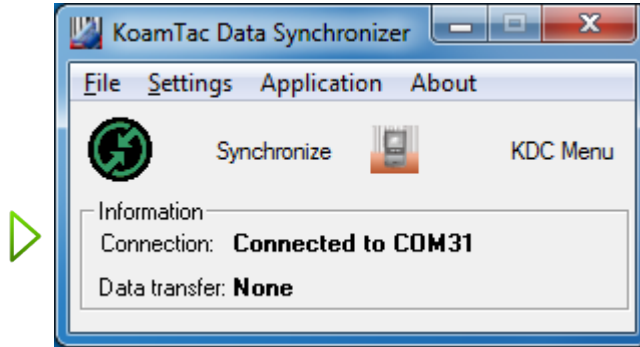
Duplicating your KDC Configuration

# KOAMTAC Fundamentals

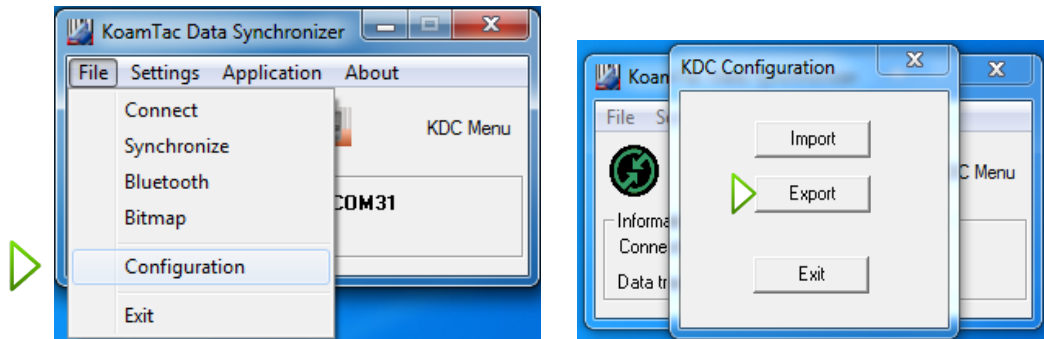
## Duplicating your KDC Configuration

This how-to will demonstrate how to replicate your KDC configuration for use on multiple KDCs. Once you have configured your main KDC to operate properly with your application, mass producing the configuration is simple using duplication. The duplication is a three step process and should only take a few minutes.

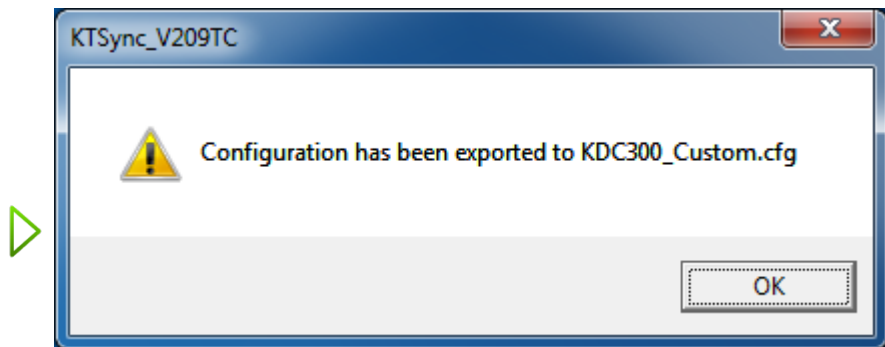
Connect your master KDC to your PC and open KTSync. KTSync will locate your KDC and open a COM port to it.



Go to File>Configuration & select Export to save the configuration from your master KDC to a file.



A pop-up box will appear after your save.

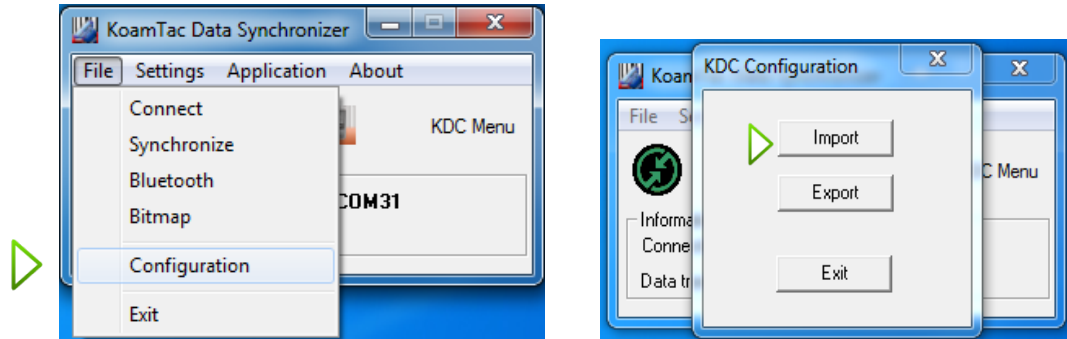


# KOAMTAC Fundamentals

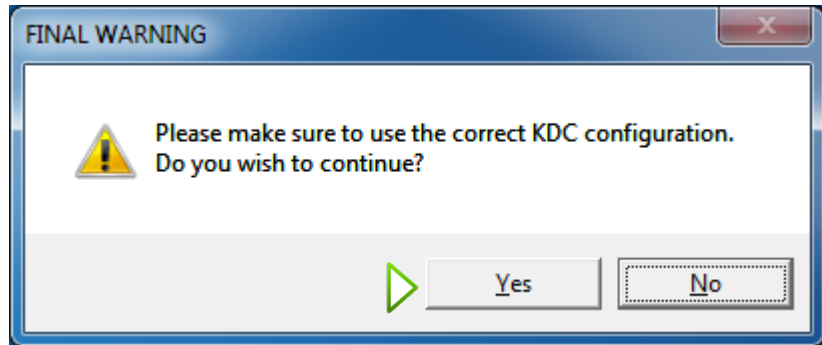
## Duplicating your KDC Configuration

After successfully exporting the master KDC configuration, connect a new KDC that you wish to configure to your PC.

Go to File>Configuration & select Import to the configuration from your master KDC to another KDC.



After selecting the master configuration .cfg file (previously created), select Yes.



A pop-up box will appear & the KDC will contain the master configuration. Repeat the import method to configure multiple KDCs.

