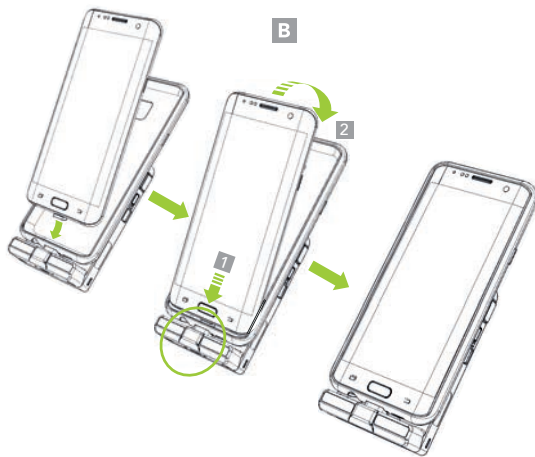


Assembly Instructions:

1. Attach the USB Connect Head to the phone. (A)



2. Slide the phone into the General Universal SmartSled. (B)



Additional KDC470/475 Accessories:

- 1-Slot Charging Cradle
- 4-Slot Charging Cradle
- HF Companion
- 0.5W UHF Companion
- 1.0W UHF Companion
- Pistol Grip
- Extended Battery

Visit our website for more information.

KOAMTAC

116 Village Blvd, Ste 305, Princeton, NJ 08540
+1 609-256-4700 p | +1 609-228-4373 f
info@koamtac.com | www.koamtac.com

KOAMTAC

KDC470/475
General Universal SmartSled
Device Installation Manual

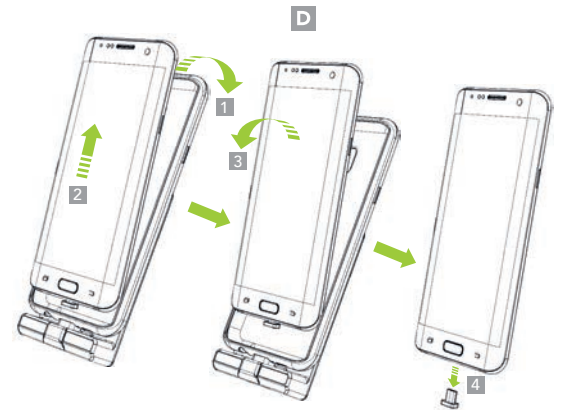


3. Inspect the connection between the General Universal SmartSled and previously installed USB Connect Head. To test the connection, attempt to charge your device via USB or Charging Cradle - a successful connection will indicate charging on your device.



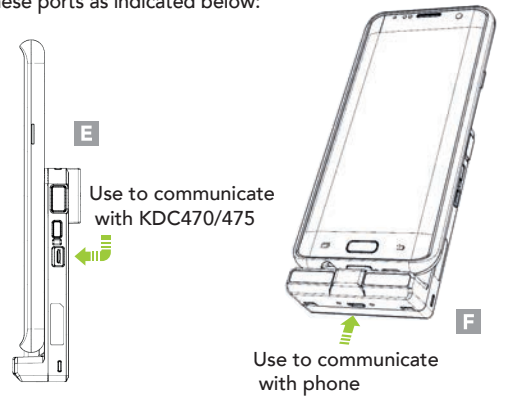
Removing Phone

Remove the phone from the case by peeling off the top edge of the General Universal SmartSled. Carefully slide the phone up and pull the phone toward you. Remove the USB Connect Head from the bottom of the phone. (D)



USB Port Usage

There is one Micro USB port on the side of the KDC470/475 (E) and one Micro USB port on the bottom of the General Universal SmartSled (F). Data communication is specific for these ports as indicated below:



*Both USB ports support KDC470/475 and phone simultaneous charging.

What's in the box?

- 1 x KDC470/475 General Universal SmartSled
- 1 x Magnetic USB Connect Head (Type C or Micro USB)

