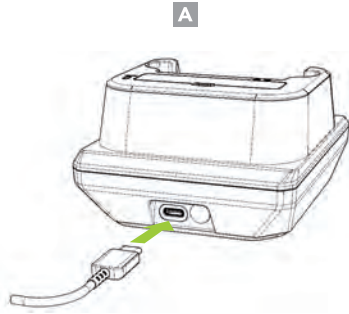


Charging via USB Type-C

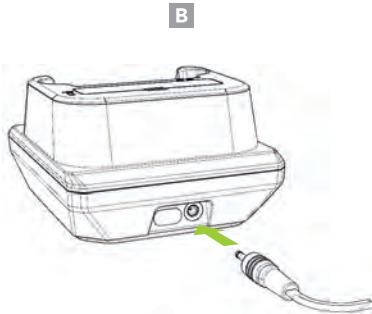
Use a genuine Samsung AFC adaptor for 9V fast charging. If not using a Samsung AFC adaptor, use a USB adaptor with at least a 5V/2A rating to provide 5V normal charging. (A)



*Fast charging is only supported when using a genuine Samsung AFC charger.

Charging via DC Connector

The 12V/2A DC power adaptor supports 9V fast charging when XCover Pro is mounted on the charging cradle. (B)



Additional Accessories

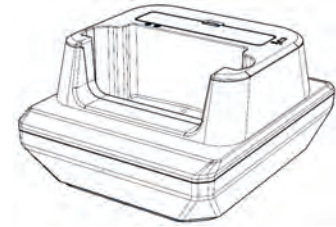
- ▶ 0.5W UHF Reader Companion
- ▶ 1.0W UHF Reader Companion
- ▶ 2000mAh Extended Battery Companion
- ▶ Pistol Grip Companion (battery optional)
- ▶ XCover Pro 1-Slot Charging Cradle
- ▶ XCover Pro 5-Slot Charging Cradle
- ▶ SKXPro 1-Slot Charging Cradle
- ▶ SKXPro 5-Slot Charging Cradle

KOAMTAC

116 Village Blvd, Ste 305, Princeton, NJ 08540
+1 609-256-4700 [p](#) | +1 609-228-4373 [f](#)
info@koamtac.com | www.koamtac.com

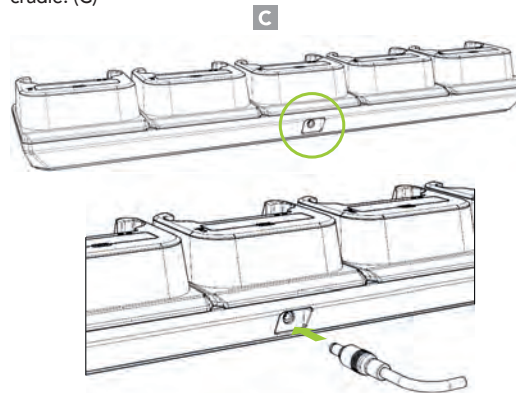
KOAMTAC

XCover Pro OtterBox
Charging Cradle Mini Guide



5-Slot Charging via DC Connector

The 12V/10A DC power adaptor supports 9V fast charging when XCover Pro is mounted on the 5-slot charging cradle. (C)

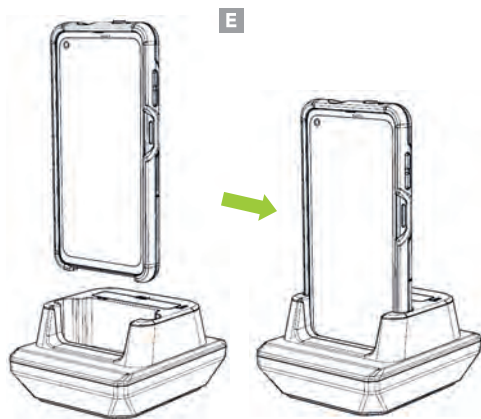


Assembly Instructions

1. Slide XCover Pro into the uniVERSE Case. (D)

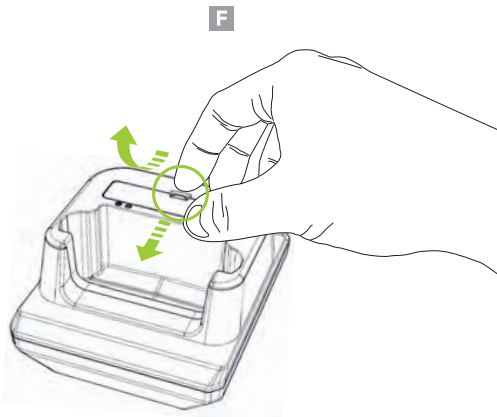


2. The XCover Pro will now fit into the charging cradle while using a uniVERSE Case. (E)



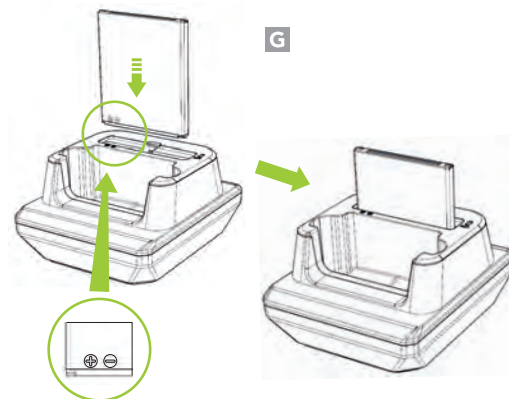
Removing the Battery Cover

To remove, pull the hook on the battery cover forward and tilt it upwards. (F)

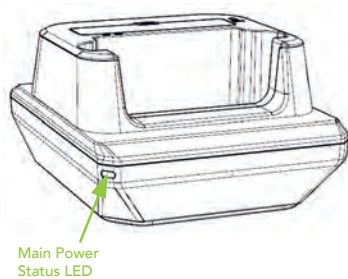


Charging the XCover Pro Battery

Insert the battery into the battery slot by referring to the battery polarity indicators. (G)

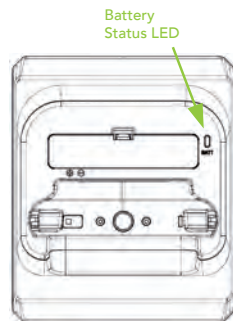


Cradle Power LED Status



Green : Always on when the cradle is powered on

Battery LED Status



Green: Fully charged
Orange: Charging

Blinking Red: Charging Issue
- Overheating
- Charging fault
- Foreign material inside

Disclaimer

Otter Products, LLC, and its related persons and entities, is not responsible for the operation of this product or its compliance with safety and regulatory standards. This product has been designed for use with certain OtterBox branded products and has been certified by the manufacturer to meet OtterBox performance standards.

Warranty Statement

IN NO EVENT WILL THE MANUFACTURER, DISTRIBUTOR OR OTTER PRODUCTS, LLC BE LIABLE FOR ANY INCIDENTAL, DIRECT, INDIRECT, SPECIAL, PUNITIVE OR CONSEQUENTIAL DAMAGES (SUCH AS, BUT NOT LIMITED TO, DAMAGES FOR LOSS OF PROFITS, BUSINESS, SAVINGS, DATA OR RECORDS) RELATED TO THIS PRODUCT. EXCEPT AS STATED HEREIN, NO OTHER WARRANTIES WILL APPLY.

KOAMTAC XCover Pro uniVERSE Case Charging Cradle
Built for OtterBox uniVERSE
Explore at Business.OtterProducts.com